

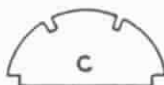
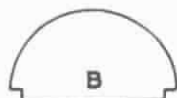
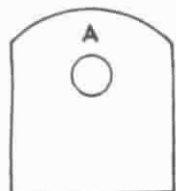
FRONT VIEW
- HALF SIZE -

CUT LICENSE NUMERALS FROM PLAN
AND CEMENT TO TOP SIDE OF RIGHT
WING

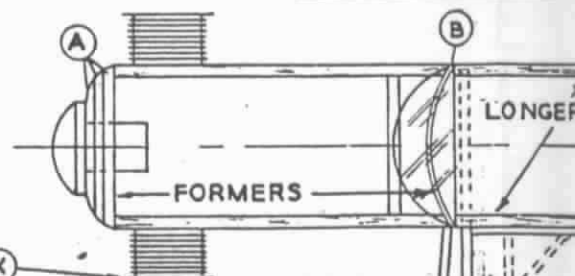
ENTIRE NOSE OF BODY
IS COVERED WITH STIFF
PAPER BETWEEN FORMERS
A & B

CEMENT PIECES "A"
TOGETHER AND
SANDPAPER TO
SHAPE SHOWN IN
TOP & SIDE VIEWS

NC10852



FORMERS



NO. F75



PORTERFIELD ZEPHYR

THREAD



MOTOR PAPERS
TO CONSTRUCT MOTORS CUT PAPERS "Z"
FROM PLAN AND SHAPE AS SHOWN AT LEFT.
CEMENT PIECES "X" IN POSITION - LASTLY
WIND BLACK THREAD AROUND "Z"

PAUL K. GUILLOW - WAKEFIELD, MASS.

