

STEP THREE - WING CONSTRUCTION
PIN CENTER SPAR TO PLAN. CEMENT AND PIN RIBS OVER SPAR. ADD LEADING AND TRAILING EDGES. ADD WING TIP PIECES TW-5 TO TW-9. USE SMALL BLOCKS AND BRING TIP UP TO CENTER SPAR. BUILD THE RIGHT TOP WING OVER RIGHT TOP WING LAYOUT. BUILD THE LEFT AND RIGHT BOTTOM WINGS OVER PROPER LAYOUTS IN SAME WAY.

STEP FIVE - STABILIZER CONSTRUCTION
CEMENT AND PIN PIECES S-1, S-2, S-3 AND S-4 TOGETHER OVER STABILIZER LAYOUT. CEMENT AND PIN CENTER SPAR IN PLACE. ADD ALL RIB MEMBERS.

STEP TWO - FUSELAGE CONSTRUCTION CONTINUED
CUT OUT ALL FORMERS FROM BALSA PRINT. CEMENT TOP AND BOTTOM FORMERS IN PLACE BETWEEN SIDE FRAMES. WORK FROM NOSE TOWARDS THE TAIL - START WITH F-4 AND F-5. ADD CROSS MEMBERS AND INTERNAL CROSS STRUTS. ADD THE TOP STRINGERS. THEN BOTTOM STRINGERS AND FINALLY THE SIDE STRINGERS.
CARVE NOSE BLOCK TO SHAPE AND CEMENT TO NOSE OF THE FUSELAGE.

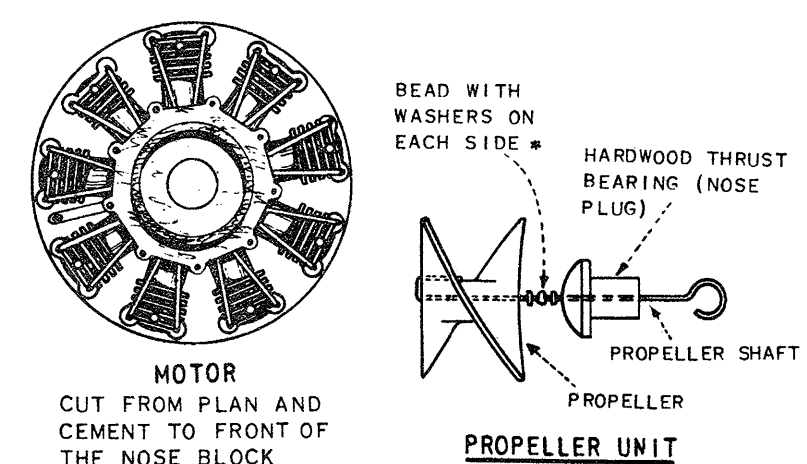
STEP FOUR - RUDDER CONSTRUCTION
CEMENT AND PIN R-1, R-2, R-3, R-4 AND R-5 TOGETHER OVER RUDDER LAYOUT. ADD CENTER SPAR, LEADING AND TRAILING EDGES. ADD RIB MEMBERS.

STEP ONE - FUSELAGE CONSTRUCTION
CUT AND PIN LONGERONS OVER SIDE FRAME LAYOUT. CUT AND FIT UPRIGHTS IN PLACE. CUT AND FIT DIAGONALS IN PLACE. CEMENT FRAME TOGETHER - PLACE CEMENT IN EACH CORNER. CUT AND CEMENT BALSA PIECES F-1, F-2 AND F-3 TO FUSELAGE SIDE FRAME. WHEN DRY, BUILD A SECOND SIDE FRAME DIRECTLY OVER THE FIRST. SPREAD A COAT OF CEMENT OVER REAR FACE OF TAILPOSTS. WHEN DRY, LIFT FRAMES FROM PLAN AND SPLIT APART EXCEPT AT TAILPOSTS.

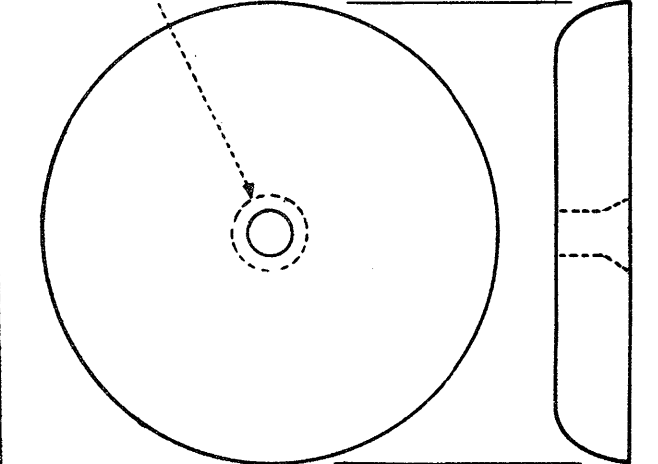
COVER SECTION BETWEEN NOSE BLOCK AND DOTTED LINE WITH STIFF PAPER (DO THIS BEFORE COVERING WITH TISSUE.)

COVER WINDOWS WITH CELLOPHANE*

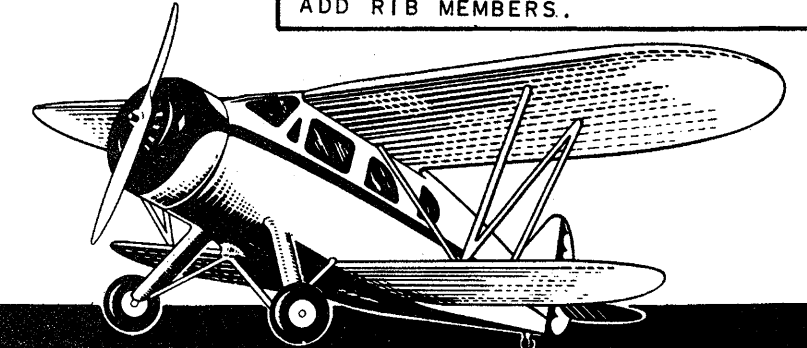
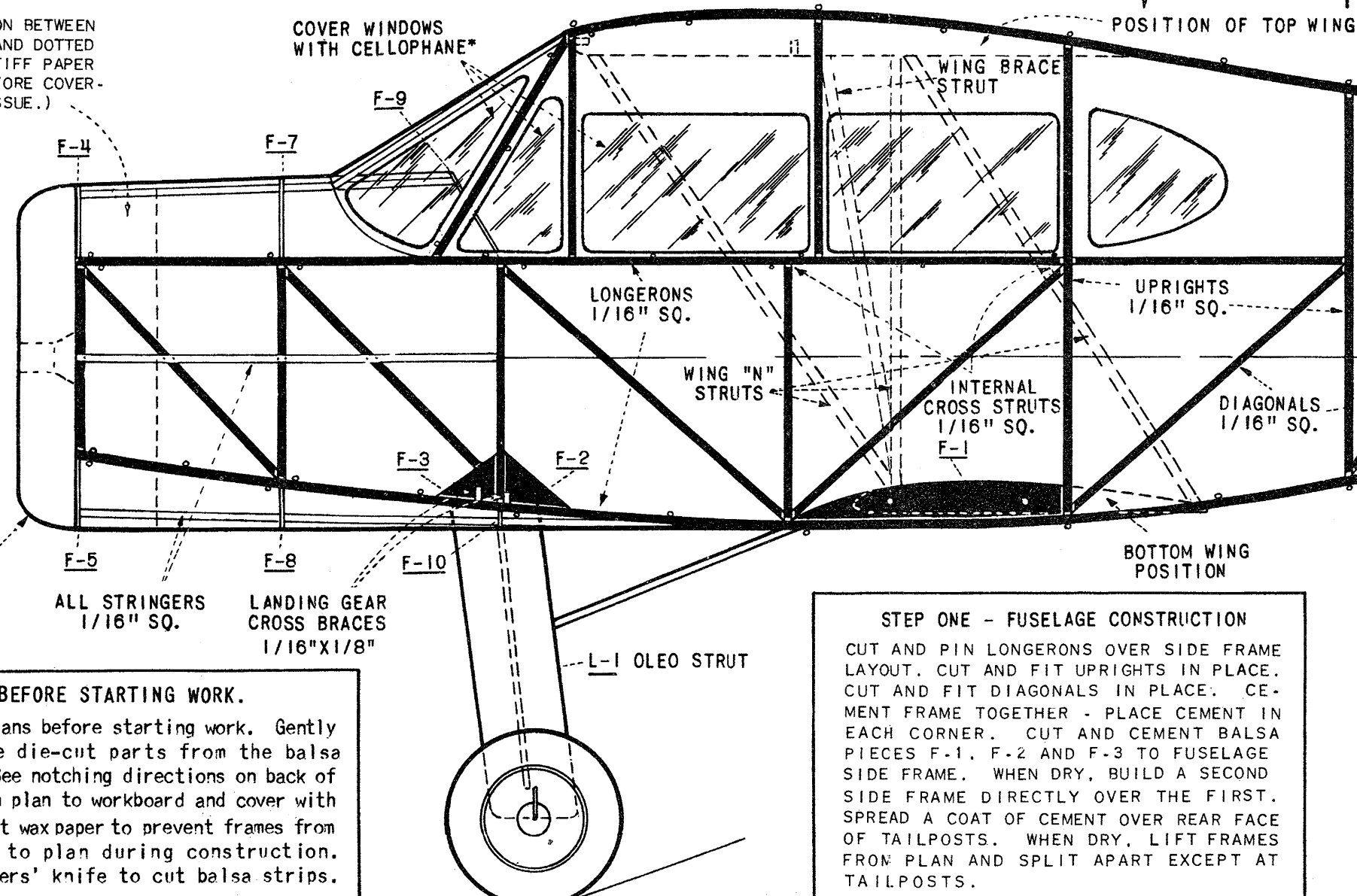
THE SMALL CIRCLES INDICATE THE POSITION OF THE PINS USED TO HOLD FRAME MEMBERS IN PLACE DURING CONSTRUCTION.



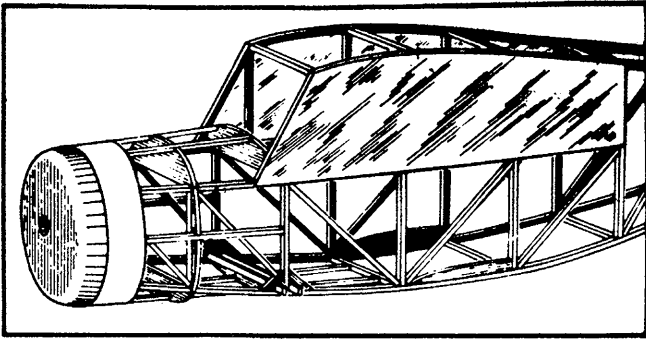
1/4" HOLE THRU BLOCK - WIDEN AT BACK.



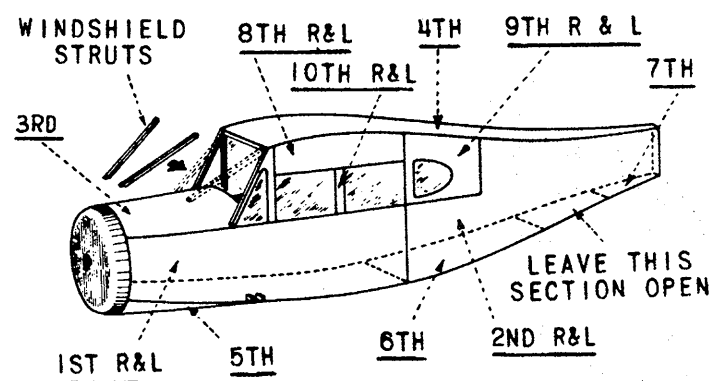
BEFORE STARTING WORK.
Study plans before starting work. Gently press the die-cut parts from the balsa sheets. See notching directions on back of plan. Pin plan to workboard and cover with transparent wax paper to prevent frames from sticking to plan during construction. Use modelers' knife to cut balsa strips.



STEP SIX - COVERING THE FRAMES



COVER WINDOW AREAS WITH CELLOPHANE. APPLY OVERSIZE PIECES AND TRIM TO SHAPE WHEN DRY. COVER COWL WITH STIFF PAPER (WHITE TYPEWRITER BOND).



NOTE: R & L MEANS RIGHT & LEFT SIDES OF FUSELAGE.

COVER FUSELAGE FRAME WITH SECTIONS OF TISSUE IN THE SEQUENCE GIVEN ABOVE. THEN ADD THE WINDSHIELD STRUTS.

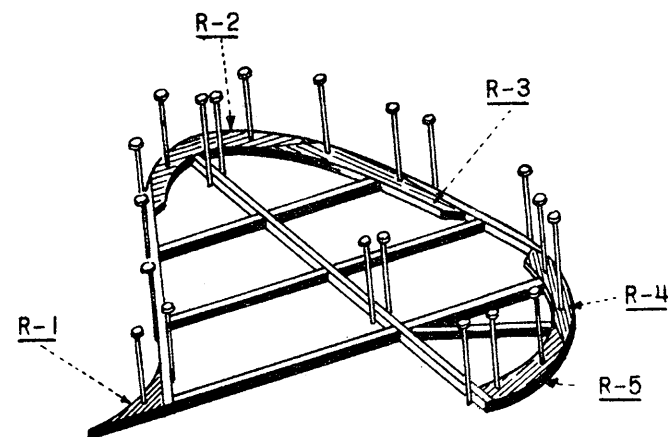
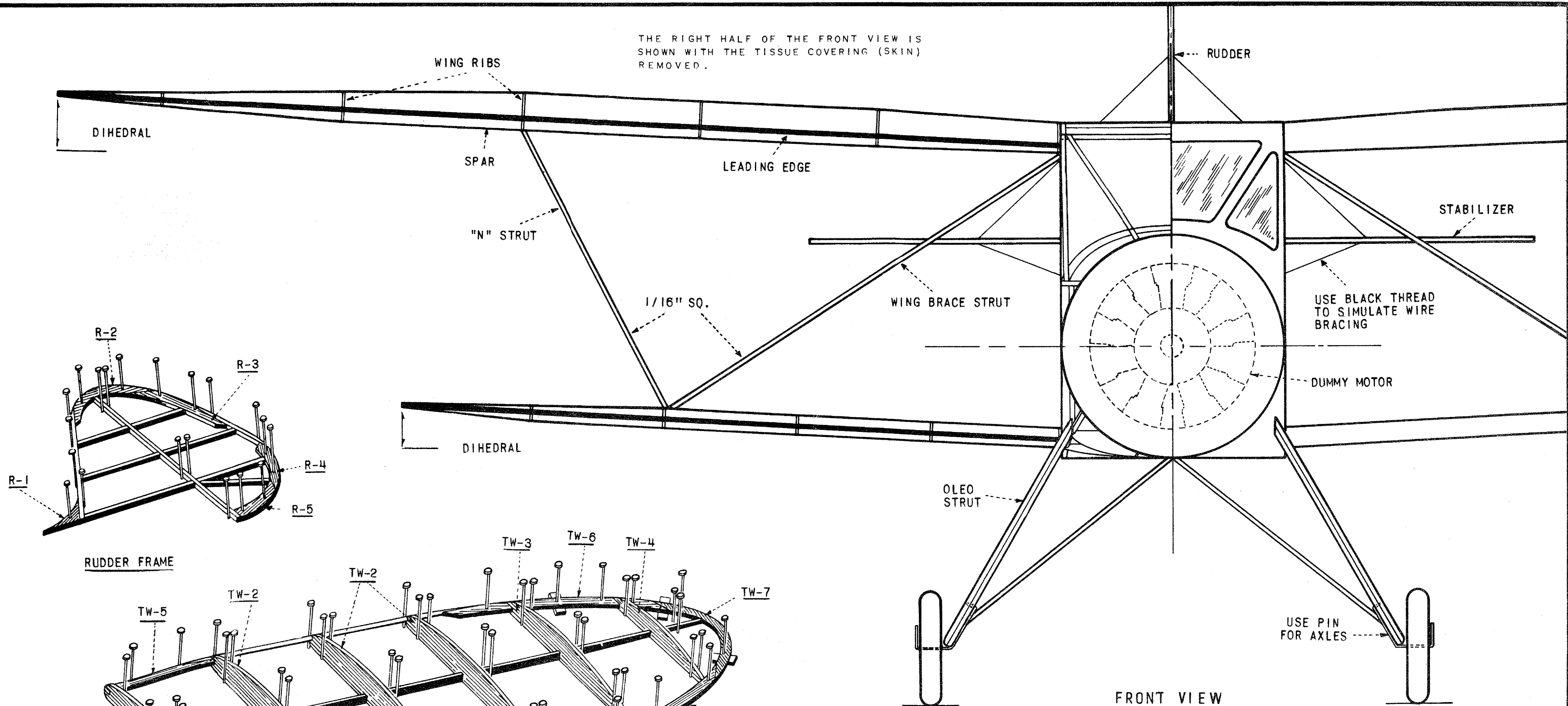
COVER TOP AND BOTTOM OF WINGS AND STABILIZERS. ALSO BOTH SIDES OF RUDDER.

STEP SEVEN - MAJOR ASSEMBLY

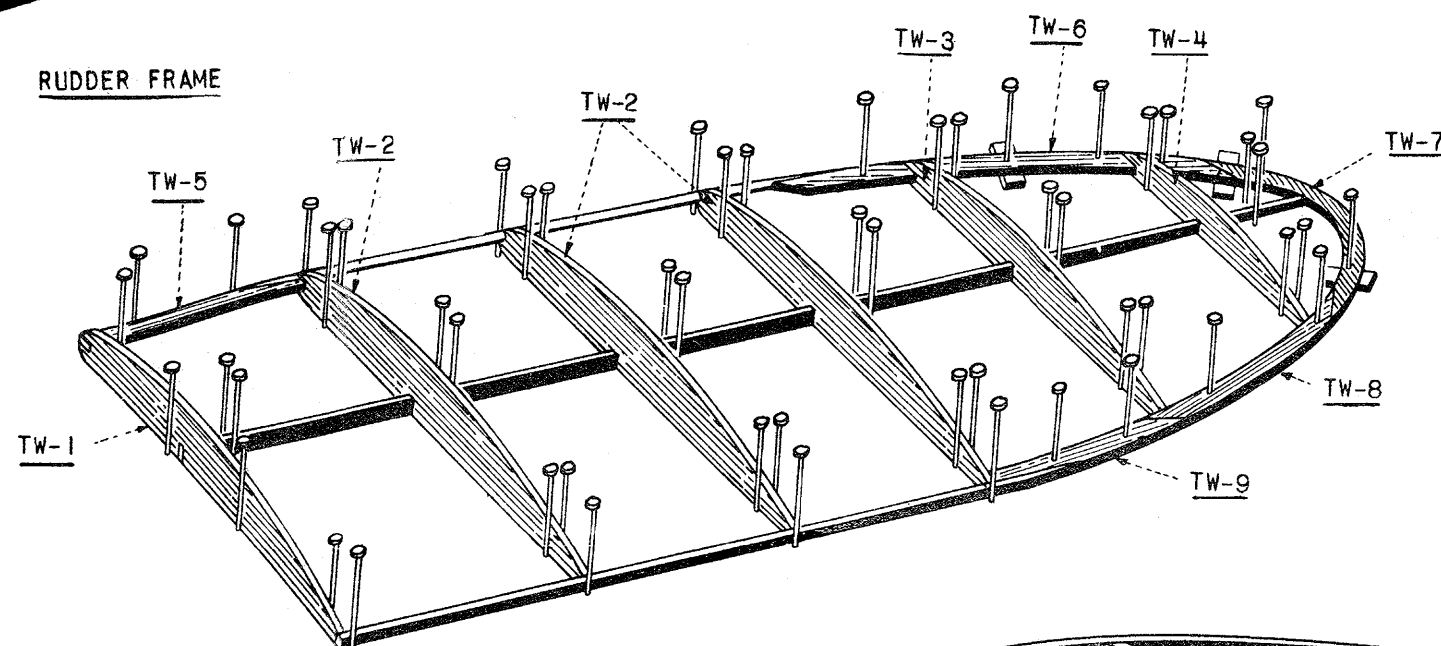
CEMENT THE RUDDER TO TAIL OF FUSELAGE. CEMENT STABILIZERS TO SIDES OF FUSELAGE. CEMENT WINGS TO SIDES OF FUSELAGE. CHECK DIHEDRAL ON FRONT VIEW. ADD 'N' STRUTS AND WING STRUT BRACES. CUT WINDSHIELD FROM CELLOPHANE AND CEMENT IN PLACE.

STEP EIGHT - FINAL ASSEMBLY

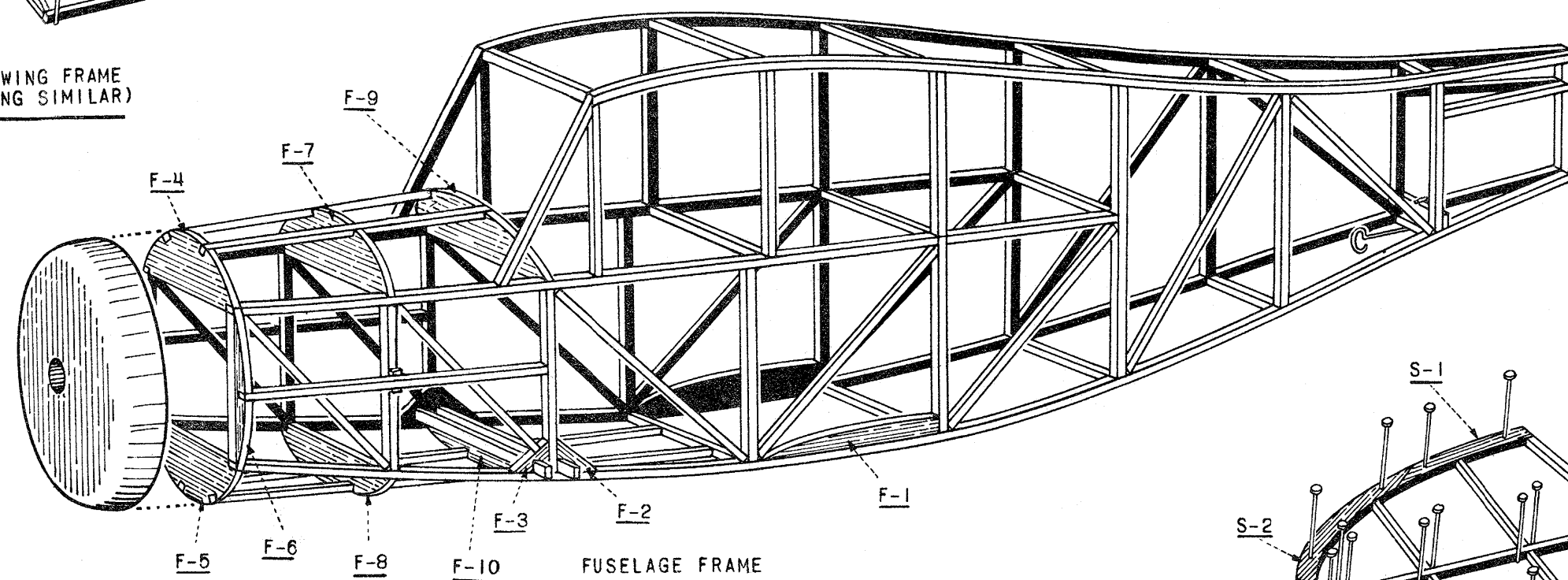
MAKE OLEO STRUTS AND CEMENT TO LANDING GEAR BRACES. ADD AXLES, WHEELS AND TAIL WHEEL. ASSEMBLE THE PROPELLER (FLYING TYPE) UNIT. INSTALL THE RUBBER MOTOR. ADD CONTROL LINES AND LICENSE NUMERALS.



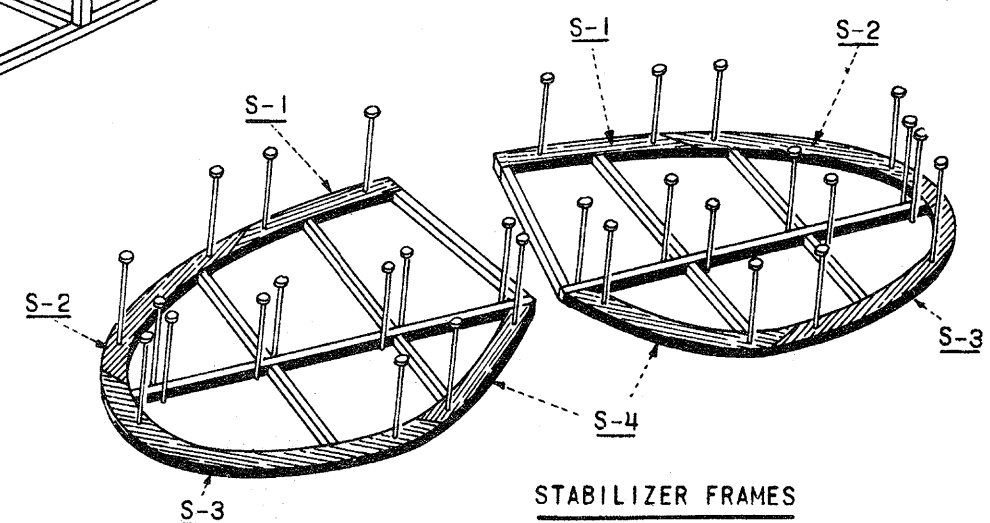
RUDDER FRAME



**TOP RIGHT WING FRAME
(BOTTOM WING SIMILAR)**



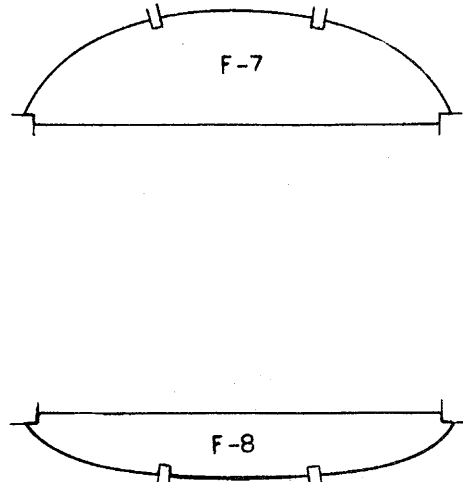
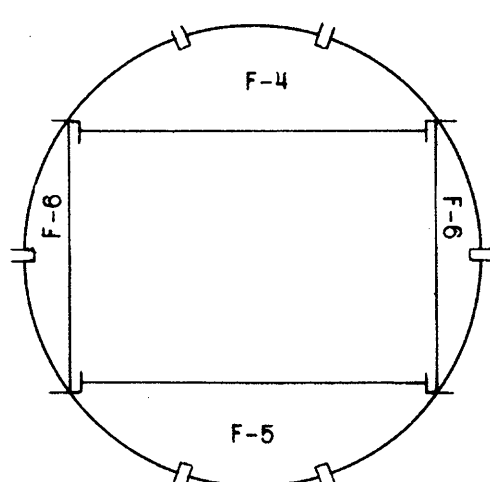
FUSELAGE FRAME



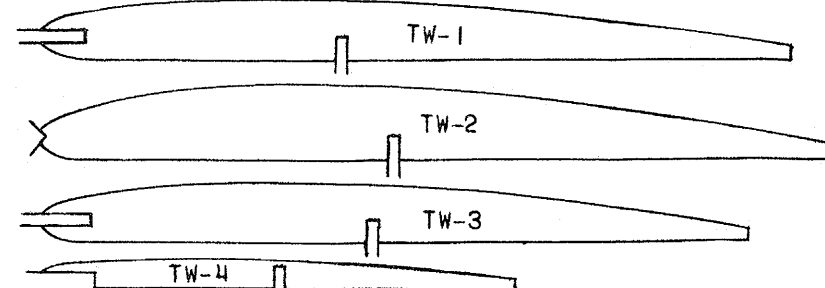
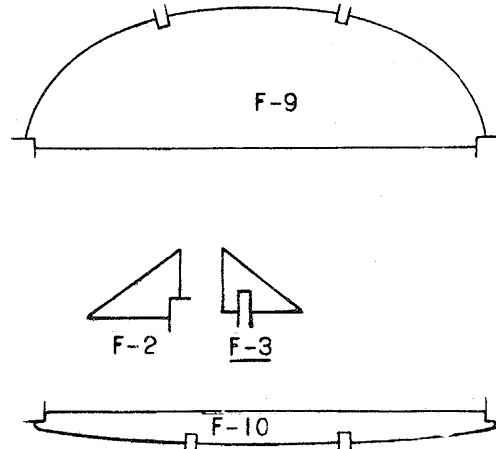
STABILIZER FRAMES

NOTCHING FORMERS AND RIBS.

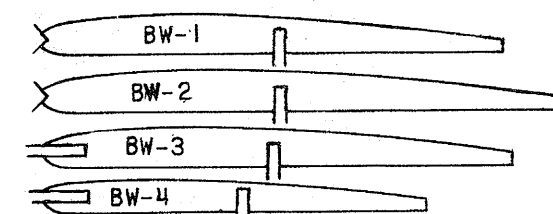
1. SET DIE CUT BLANKS OVER PATTERNS ON PLAN. PIN IN PLACE.
2. MARK NOTCH LOCATIONS ON BLANKS WITH PENCIL.
3. CUT NOTCHES WITH RAZOR BLADE KNIFE OR MODELERS' KNIFE.



FUSELAGE FORMERS

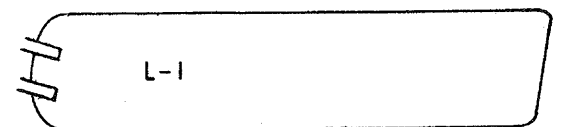


TOP WING RIBS



BOTTOM WING RIBS

MAKE NOTCHES 1/8" DEEP.



OLEO STRUT
CEMENT TWO L-1'S TOGETHER
TO MAKE EACH OLEO STRUT.